



Meaco (U.K.) Limited
Meaco House
Parklands, Railton Road
Guildford
Surrey GU2 9JX

Your local dealer is:

Free call 0500 418458
Fax 01483 232700

www.meaco.com
sales@meaco.com



Meaco Swimming Pool Dehumidifiers

Why Dehumidify?

If you are lucky enough to own an indoor swimming pool or hot tub then you must have a dehumidifier. An indoor swimming pool, even with a cover in place, evaporates a huge amount of water every day and will cause serious damage, very quickly, to the decoration and structure of the swimming pool hall unless you have a dehumidifier installed. It really is

impossible to have an indoor swimming pool without a dehumidifier.

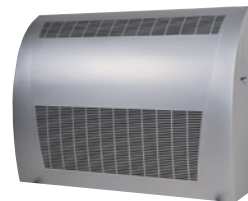
Meaco was formed in 1991 and are one of the most experienced and trusted suppliers of dehumidifiers in Britain and have reputation for combining exacting standards, to achieve quality products with friendly, practical advice. Within this brochure you will find details of swimming

pool dehumidifiers that can either hang on the wall in the swimming pool hall or be positioned in a separate plant room. All units are based on heat pump technology and deliver the energy used whilst drying back to the room as heat, ensuring that they are as energy efficient as possible.

Meaco D850e/D950e

The D850e and the D950e are well established, entry level swimming pool dehumidifiers that we have been selling for the past 10 years and are installed in hundreds of swimming pools across the country.

They provide a reliable, low cost solution where just dehumidification is required. Both models can be either wall or floor mounted and have a choice of several drain points at the rear or side of the unit. An electronic humidistat allows for precision control which helps to reduce running costs.



Model		D850e	D950e
Mounting	Floor	✓	
	Wall	✓	
	TTW		
Extraction rate per day*		55L	74L
Maximum pool size**		44m²	60m²
Total heat delivered to the air		850w	1200w
Electronic humidistat		Yes	
Display		Yes	
Manual humidistat		No	
Power consumption		850w	1200w
Nominal running		4.5A	6A
Startup current		18A	24A
Maximum noise level***		52dB	52dB
Air Flow m³/hour		500	680
Operating temperatures		7 to 35°C	
Weight		39Kgs	44Kgs
Dimensions (mm)	H	750	
	W	660	
	D	345	
LPHW		No	
Total heat LPHW + Dehumidifier		n/a	
Radio humidistat		No	

Meaco 800i/1200i

The 800i/1200i are very powerful dehumidifiers designed for larger pools up to a massive 160 square metres in size.

These models have gone through a rigorous design and testing process but are very competitively priced when compared with their dehumidifier peers. As well as sharing the low noise level of the 300i/500i models the 800i/1200i also benefit from having highly accurate electronic humidistat that ensures energy consumption is kept to an absolute minimum.

The 800i/1200i can be mounted either on the floor or the wall and have the option of LPHW heating when used in the pool hall or through wall mounting when used in a separate plant room.

Model		800iM	1200iM	800iM-LPHW	1200iM-LPHW	800iMTTW	1200iMTTW
Mounting	Floor	✓	✓	✓	✓		
	Wall	✓	✓	✓	✓		
	TTW					✓	✓
Extraction rate per day*		148L	197L	148L	197L	148L	197L
Maximum pool size**		118m²	157m²	118m²	157m²	118m²	157m²
Total heat delivered to the air		2800w	4400w	2800w	4400w	2800w	4400w
Electronic humidistat		Yes					
Display		Yes					
Manual humidistat		No					
Power consumption		1700w	2400w	1700w	2400w	1700w	2400w
Nominal running		8.5A	11A	8.5A	11A	8.5A	11A
Startup current		16A	20A	16A	20A	16A	20A
Maximum noise level***		46dB					
Air Flow m³/hour		740					
Operating temperatures		15 to 35°C					
Weight		96Kgs	100Kgs	96Kgs	100Kgs	96Kgs	100Kgs
Dimensions (mm)	H	950					
	W	1250					
	D	310					
LPHW		No	No	4kW	4kW	No	No
Total heat LPHW + Dehumidifier		n/a	n/a	6.8kW	8.4kW	n/a	n/a
Radio humidistat		Optional					

Remote humidistat

For greater accuracy we recommend the use of our remote radio humidistat which allows you to position the relative humidity and temperature sensor in the furthest corner of the pool hall.

This takes regular readings of the conditions and sends a radio signal back to the receiver inside the dehumidifier which then reacts accordingly. This method ensures that the pool room is dried evenly and avoids mould growth in cold spots.



Meaco 300i/500i

The 300i/500i series is available in a plastic, metal or stainless steel finish to compliment any swimming pool environment.

The 300i/500i are the result of many years research and development, delivering a tried and tested solution to long term, economic, relative humidity control in a swimming pool environment.

One example of the superior build quality is their very low noise level in comparison to other wall mounted dehumidifiers.

Both models can optionally be equipped with low pressure hot water heating (LPHW) to provide up to 5.5kW of heating to the pool hall. Alternatively the 300iPTTW and the 500iPTTW can be

mounted in a separate room and the air ducted in and out of the dehumidifier through grills.

The metal and stainless steel versions have highly accurate electronic humidistats for close control of the pool hall environment as well as an electronic readout of the current conditions.

300i

300i comes in three finishes, plastic, stainless steel and metal

Model		300iP	300iM	300iSS	300iP /M/SS-LPHW	300iPTTW
Mounting	Floor					
	Wall	✓	✓	✓	✓	
	TTW					✓
Extraction rate per day*		54L				
Maximum pool size**		43m²				
Total heat delivered to the air		900w				
Electronic humidistat		No	Yes	Yes	Yes (M/SS)	No
Display		No	Yes	Yes	Yes (M/SS)	No
Manual humidistat		Yes	No	No	Yes (P)	Yes
Power consumption		750w				
Nominal running		4.4A				
Startup current		10A				
Maximum noise level***		44dB				
Air Flow m³/hour		440				
Operating temperatures		15 to 35°C				
Weight		40Kgs				
Dimensions (mm)	H	653				
	W	780				
	D	255				
LPHW		No	No	No	2kW	No
Total heat LPHW + Dehumidifier		n/a	n/a	n/a	2.9kW	n/a
Radio humidistat		Optional				

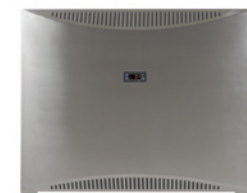
500i

500i comes in three finishes, plastic, stainless steel and metal

Model		500iP	500iM	500iSS	500iP /M/SS-LPHW	500iPTTW
Mounting	Floor					
	Wall	✓	✓	✓	✓	
	TTW					✓
Extraction rate per day*		108L				
Maximum pool size**		86m²				
Total heat delivered to the air		1500w				
Electronic humidistat		No	Yes	Yes	Yes (M/SS)	No
Display		No	Yes	Yes	Yes (M/SS)	No
Manual humidistat		Yes	No	No	Yes (P)	Yes
Power consumption		1200w				
Nominal running		7.5A				
Startup current		16A				
Maximum noise level***		44dB				
Air Flow m³/hour		740				
Operating temperatures		15 to 35°C				
Weight		60Kgs				
Dimensions (mm)	H	653				
	W	1245				
	D	255				
LPHW		No	No	No	4kW	No
Total heat LPHW + Dehumidifier		n/a	n/a	n/a	5.5kW	n/a
Radio humidistat		Optional				



Plastic



Stainless steel



Metal



Plastic



Stainless steel



Metal

* At 30°C & 80%rh

** We can calculate the right size dehumidifier for your pool for you, to do this we need to know the surface area of the water, the temperature of the water and the air and whether or not a cover is used.

*** When comparing noise levels, note that a difference of 6-10dBA (decibels) is perceived to be twice as loud by the human ear.

LPHW heating figures are based on 90/70°C water temperature in/out.

We reserve the right to make alterations and enhancements to the product range as required.